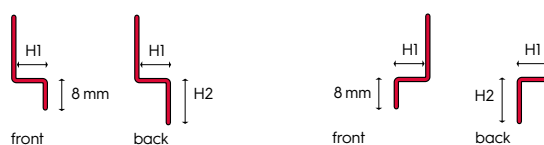
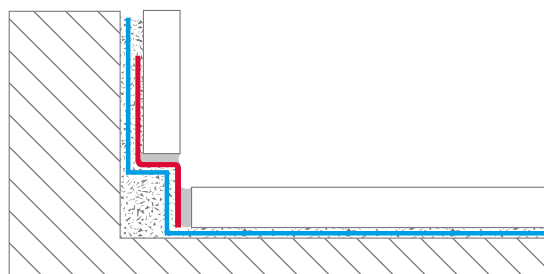


fuma // DRAIN – WALL SLOPE PROFILES

Stainless steel 1.4301/304, for floor-level shower facilities, 2 % slope

Item-no.	FWA
Product group	Wall slope profiles for wall application
Hight H1	8* / 10 / 11 mm (*only available in brushed)
Hight H2	24 / 32 / 40* mm (*only available in brushed)
Length	98 / 148 / 200* cm (*only available in brushed)
Material	Stainless steel V2A (304) Material number: 1.4301 Billet X5CrNi18-10
Surface	FWA: brushed FWA-SW: color coated black matt
Fire resistance in accordance to DIN EN 13501	A1 (non-flammable)
Linear coefficient of expansion	$16 \times 10^{-6} \text{ m/m}^\circ\text{C}$
Density approx	7.9 kg/dm^3
Hardness approx	250 HB
Tensile strenght Rm at 20°C	500 – 700 N/mm ²
Elongation A5 at 20°C	35%
1% Yield strenght Rp 1,0 at 20°C	250 N/mm ²

Drawing

left version
 (view to drainage channel)

right version
 (view to drainage channel)