

fuma // ROUND – ROUND EDGE PROFILES STAINLESS STEEL, ALUMINUM OR PVC**// APPLICATION**

Round edge profiles (closed) from fuma-Bautec were developed as a handsome edging profile for the corners of external walls. They are smoothly rounded and available in a variety of materials. Aside from their protective function, they can also be used for attractive design purposes. They are also suitable for use as a covering as skirting for tiled or carpeted, parquet or natural stone floors. High-quality formed pieces are available for joining profile sections together.

// MATERIAL

C-shaped profiles are available in the following materials:

- **anodized aluminum, high-gloss anodized aluminum, color coated and texture coated aluminum**
- **stainless steel in surfaces glossy, brushed and chromeplated high gloss**
- **hard PVC (no emollients)**

Aluminum round edge profiles can be in any location where the environment is not expected to be too tough. To avoid staining (corrosion) of the profile surface care must be taken with cement materials. Since aluminum is sensitive to alkaline substances, any residues from mortar, tile adhesive or grout should be wiped from visible surfaces immediately. The profiles should be fully embedded in the adhesive layer. This prevents the creation of any pockets in which alkaline water solutions could collect (especially in areas where there is a lot of water present). Anodized aluminum profiles are specially treated so that surfaces should not normally change. Visible surfaces, though, must nevertheless be protected from all cement materials. Damage can also occur due to grating or abrasive grout or other objects.

Round edge profiles made of stainless steel are the ideal choice for sophisticated and appealing entrance areas. They also meet the highest requirements with regard to mechanical loading.

Stainless steel profiles are used not only in homes, but in the food industry, hospitals, swimming pools, breweries and other applications where particularly exacting requirements must be met with regard to cleanliness, hygiene, resilience and chemical resistance. Note: Depending on the type and extent of chemical exposure, the use of type 1.4404 (316L) stainless steel is recommended.

PVC profiles offer a wide range of colours and can thus be perfectly matched to the colours of the tiling. N.B.: The use of coloured mortar with ultra fine colour pigments in conjunction with plastic profiles may result in permanent staining of the profiles. We recommend taking appropriate protective measures as a precaution.

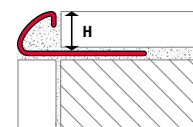
Round edge-corner pieces provide a neat and technically accomplished solution for inside and outside corners, without having to cut and mitre the profiles. Use of the appropriate corner pieces even makes it possible to design corners in all three dimensions. For all products and materials, the following applies: The suitability of the material with regard to the expected mechanical loading and chemical exposure must be investigated carefully in each individual case. The generally recognised rules of good engineering practice must always be observed!

// INSTALLATION

1. Select the round edge profiles appropriate to the tile thickness.
2. Apply tile adhesive with a serrated trowel.
3. Press the round edge profiles into the adhesive bed and align them correctly.
4. Trowel over the attachment base.
5. Press the tiles in firmly and align them in such a way that they are flush with the surface of the profiles.
Lay tiles across the entire surface.
6. Use the matching inside and outside corner pieces.
7. Allow a gap of about 2-3 mm between the tiles and profile.
8. Fill the gap between the tiles and profile with grout.

// MAINTENANCE

Round edge profiles do not require any special care. They can easily be cleaned when necessary using clear, clean water with a few drops of washing up liquid. Cleaning agents must specifically be free of hydrochloric or fluoric acid and must not be abrasive. No cleaning agents containing solvents may be used in conjunction with PVC profiles. Observe the manufacturers' own maintenance instructions.



fuma // ROUND - ROUND EDGE PROFILES STAINLESS STEEL 1.4301/304 with corner pieces

Length: 2.50 m

| Height in mm | Art No. |
|--------------|-------------|
| 6.0 | FEV 060-250 |
| 8.0 | FEV 080-250 |
| 10.0 | FEV 100-250 |
| 11.0 | FEV 110-250 |
| 12.5 | FEV 125-250 |

Length: 3.00 m

| Height in mm | Art No. |
|--------------|-------------|
| 6.0 | FEV 060-300 |
| 8.0 | FEV 080-300 |
| 10.0 | FEV 100-300 |
| 11.0 | FEV 110-300 |
| 12.5 | FEV 125-300 |

glossy



Also available without protective film on request. Please specify when ordering.

External corners

| Height in mm | Art No. |
|--------------|-----------|
| 6.0 | E-FEV 060 |
| 8.0 | E-FEV 080 |
| 10.0 | E-FEV 100 |
| 11.0 | E-FEV 110 |
| 12.5 | E-FEV 125 |

Internal corners

| Height in mm | Art No. |
|--------------|-----------|
| 6.0 | I-FEV 060 |
| 8.0 | I-FEV 080 |
| 10.0 | I-FEV 100 |
| 11.0 | I-FEV 110 |
| 12.5 | I-FEV 125 |



External corners - Metal die-cast

| Height in mm | Art No. |
|--------------|-----------|
| - | - |
| 8.0 | E-FIV 080 |
| 10.0 | E-FIV 100 |
| 11.0 | E-FIV 110 |
| 12.5 | E-FIV 125 |

Internal corners - Metal die-cast

| Height in mm | Art No. |
|--------------|-----------|
| - | - |
| 8.0 | I-FIV 080 |
| 10.0 | I-FIV 100 |
| 11.0 | I-FIV 110 |
| 12.5 | I-FIV 125 |

Metal die-cast



Length: 2.50 m

| Height in mm | Art No. |
|--------------|--------------|
| 6.0 | FEVS 060-250 |
| 8.0 | FEVS 080-250 |
| 10.0 | FEVS 100-250 |
| 11.0 | FEVS 110-250 |
| 12.5 | FEVS 125-250 |

Length: 3.00 m

| Height in mm | Art No. |
|--------------|--------------|
| 6.0 | FEVS 060-300 |
| 8.0 | FEVS 080-300 |
| 10.0 | FEVS 100-300 |
| 11.0 | FEVS 110-300 |
| 12.5 | FEVS 125-300 |

brushed



External corners

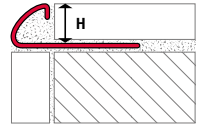
| Height in mm | Art No. |
|--------------|------------|
| 6.0 | E-FEVS 060 |
| 8.0 | E-FEVS 080 |
| 10.0 | E-FEVS 100 |
| 11.0 | E-FEVS 110 |
| 12.5 | E-FEVS 125 |

Internal corners

| Height in mm | Art No. |
|--------------|------------|
| 6.0 | I-FEVS 060 |
| 8.0 | I-FEVS 080 |
| 10.0 | I-FEVS 100 |
| 11.0 | I-FEVS 110 |
| 12.5 | I-FEVS 125 |



→ More surfaces on the next page.



fuma // ROUND - ROUND EDGE PROFILES STAINLESS STEEL 1.4301/304
with corner pieces

Length: 2.50 m

| Height in mm | Art No. |
|--------------|--------------|
| 8.0 | FEVC 080-250 |
| 10.0 | FEVC 100-250 |
| 11.0 | FEVC 110-250 |
| 12.5 | FEVC 125-250 |

chrome plated

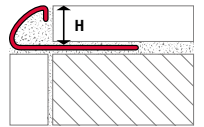


External corners

| Height in mm | Art No. |
|--------------|------------|
| 8.0 | E-FEVC 080 |
| 10.0 | E-FEVC 100 |
| 11.0 | E-FEVC 110 |
| 12.5 | E-FEVC 125 |

Internal corners

| Height in mm | Art No. |
|--------------|------------|
| 8.0 | I-FEVC 080 |
| 10.0 | I-FEVC 100 |
| 11.0 | I-FEVC 110 |
| 12.5 | I-FEVC 125 |



fuma // ROUND - ROUND EDGE PROFILES STAINLESS STEEL 1.4404/316L
with corner pieces

316L

Length: 2.50 m

| Height in mm | Art No. |
|--------------|-----------------|
| 8.0 | FEV 080 V4A-250 |
| 10.0 | FEV 100 V4A-250 |

glossy



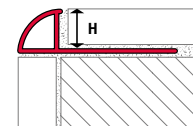
External corners

| Height in mm | Art No. |
|--------------|---------------|
| 8.0 | E-FEV 080 V4A |
| 10.0 | E-FEV 100 V4A |

Internal corners

| Height in mm | Art No. |
|--------------|---------------|
| 8.0 | I-FEV 080 V4A |
| 10.0 | I-FEV 100 V4A |





fuma // ROUND - ROUND EDGE PROFILES ALUMINUM

with corner pieces

Length: 2.50 m

| Height in mm | Art No. |
|--------------|--------------|
| 6.0 | FVGS 060-250 |
| 8.0 | FVGS 080-250 |
| 10.0 | FVGS 100-250 |
| 12.5 | FVGS 125-250 |

Length: 3.00 m

| Height in mm | Art No. |
|--------------|--------------|
| 6.0 | FVGS 060-300 |
| 8.0 | FVGS 080-300 |
| 10.0 | FVGS 100-300 |
| 12.5 | FVGS 125-300 |

silver anodized

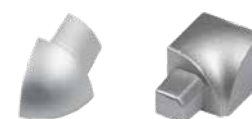


External corners

| Height in mm | Art No. |
|--------------|------------|
| 6.0 | E-FVGS 060 |
| 8.0 | E-FVGS 080 |
| 10.0 | E-FVGS 100 |
| 12.5 | E-FVGS 125 |

Internal corners

| Height in mm | Art No. |
|--------------|------------|
| 6.0 | I-FVGS 060 |
| 8.0 | I-FVGS 080 |
| 10.0 | I-FVGS 100 |
| 12.5 | I-FVGS 125 |



Length: 2.50 m

| Height in mm | Art No. |
|--------------|--------------|
| 6.0 | FVGC 060-250 |
| 8.0 | FVGC 080-250 |
| 10.0 | FVGC 100-250 |
| 12.5 | FVGC 125-250 |

silver high-gloss anodized



External corners

| Height in mm | Art No. |
|--------------|------------|
| 6.0 | E-FVGC 060 |
| 8.0 | E-FVGC 080 |
| 10.0 | E-FVGC 100 |
| 12.5 | E-FVGC 125 |

Internal corners

| Height in mm | Art No. |
|--------------|------------|
| 6.0 | I-FVGC 060 |
| 8.0 | I-FVGC 080 |
| 10.0 | I-FVGC 100 |
| 12.5 | I-FVGC 125 |



Length: 2.50 m

| Height in mm | Art No. |
|--------------|--------------|
| 8.0 | FVHS 080-250 |
| 10.0 | FVHS 100-250 |
| 12.5 | FVHS 125-250 |

silver high-gloss anodized brushed



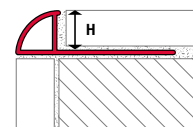
External corners

| Height in mm | Art No. |
|--------------|------------|
| 8.0 | E-FVHS 080 |
| 10.0 | E-FVHS 100 |
| 12.5 | E-FVHS 125 |

Internal corners

| Height in mm | Art No. |
|--------------|------------|
| 8.0 | I-FVHS 080 |
| 10.0 | I-FVHS 100 |
| 12.5 | I-FVHS 125 |



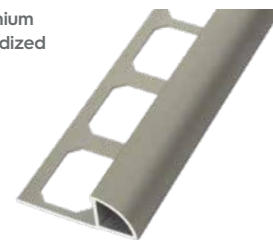


fuma // ROUND - ROUND EDGE PROFILES ALUMINUM with corner pieces

Length: 2.50 m

| Height in mm | Art No. |
|--------------|--------------|
| 8.0 | FVGT 080-250 |
| 10.0 | FVGT 100-250 |
| 12.5 | FVGT 125-250 |

titanium
anodized



External corners

| Height in mm | Art No. |
|--------------|------------|
| 8.0 | E-FVGT 080 |
| 10.0 | E-FVGT 100 |
| 12.5 | E-FVGT 125 |

Internal corners

| Height in mm | Art No. |
|--------------|------------|
| 8.0 | I-FVGT 080 |
| 10.0 | I-FVGT 100 |
| 12.5 | I-FVGT 125 |



Length: 2.50 m

| Height in mm | Art No. |
|--------------|--------------|
| 8.0 | FVTH 080-250 |
| 10.0 | FVTH 100-250 |
| 12.5 | FVTH 125-250 |

titanium
high-gloss
anodized



External corners

| Height in mm | Art No. |
|--------------|------------|
| 8.0 | E-FVTH 080 |
| 10.0 | E-FVTH 100 |
| 12.5 | E-FVTH 125 |

Internal corners

| Height in mm | Art No. |
|--------------|------------|
| 8.0 | I-FVTH 080 |
| 10.0 | I-FVTH 100 |
| 12.5 | I-FVTH 125 |



Length: 2.50 m

| Height in mm | Art No. |
|--------------|--------------|
| 8.0 | FVTS 080-250 |
| 10.0 | FVTS 100-250 |
| 12.5 | FVTS 125-250 |

titanium
high-gloss
anodized
brushed



External corners

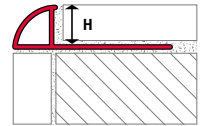
| Height in mm | Art No. |
|--------------|------------|
| 8.0 | E-FVTS 080 |
| 10.0 | E-FVTS 100 |
| 12.5 | E-FVTS 125 |

Internal corners

| Height in mm | Art No. |
|--------------|------------|
| 8.0 | I-FVTS 080 |
| 10.0 | I-FVTS 100 |
| 12.5 | I-FVTS 125 |



→ More surfaces
on the next page.



fuma // ROUND - ROUND EDGE PROFILES ALUMINUM with corner pieces

Length: 2.50 m

| Height in mm | Art No. |
|--------------|----------------|
| 100 | FVAE 100-M-250 |
| 125 | FVAE 125-M-250 |

External corners

| Height in mm | Art No. |
|--------------|--------------|
| 100 | E-FVAE 100-M |
| 125 | E-FVAE 125-M |

Internal corners

| Height in mm | Art No. |
|--------------|--------------|
| 100 | I-FVAE 100-M |
| 125 | I-FVAE 125-M |

brass
anodized



Length: 2.50 m

| Height in mm | Art No. |
|--------------|------------------|
| 100 | FVAE 100-SWG-250 |
| 125 | FVAE 125-SWG-250 |

External corners

| Height in mm | Art No. |
|--------------|----------------|
| 100 | E-FVAE 100-SWG |
| 125 | E-FVAE 125-SWG |

Internal corners

| Height in mm | Art No. |
|--------------|----------------|
| 100 | I-FVAE 100-SWG |
| 125 | I-FVAE 125-SWG |

black
high-gloss
anodized



Length: 2.50 m

| Height in mm | Art No. |
|--------------|------------------|
| 100 | FVAE 100-SWS-250 |
| 125 | FVAE 125-SWS-250 |

External corners

| Height in mm | Art No. |
|--------------|----------------|
| 100 | E-FVAE 100-SWS |
| 125 | E-FVAE 125-SWS |

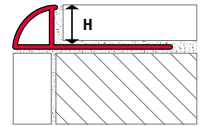
Internal corners

| Height in mm | Art No. |
|--------------|----------------|
| 100 | I-FVAE 100-SWS |
| 125 | I-FVAE 125-SWS |

black
high-gloss
anodized
brushed



→ More surfaces
on the next page.



fuma // ROUND - ROUND EDGE PROFILES ALUMINUM
with corner pieces

Length: 2.50 m

| Height in mm | Art No. |
|--------------|-----------------|
| 100 | FVAE 100-BS-250 |
| 125 | FVAE 125-BS-250 |

External corners

| Height in mm | Art No. |
|--------------|---------------|
| 100 | E-FVAE 100-BS |
| 125 | E-FVAE 125-BS |

Internal corners

| Height in mm | Art No. |
|--------------|---------------|
| 100 | I-FVAE 100-BS |
| 125 | I-FVAE 125-BS |

bronze
anodized
brushed



Length: 2.50 m

| Height in mm | Art No. |
|--------------|------------------|
| 100 | FVAE 100-KGS-250 |
| 125 | FVAE 125-KGS-250 |

External corners

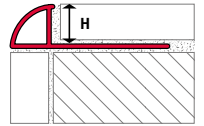
| Height in mm | Art No. |
|--------------|----------------|
| 100 | E-FVAE 100-KGS |
| 125 | E-FVAE 125-KGS |

Internal corners

| Height in mm | Art No. |
|--------------|----------------|
| 100 | I-FVAE 100-KGS |
| 125 | I-FVAE 125-KGS |

copper
high-gloss
anodized
brushed





fuma // ROUND - ROUND EDGE PROFILES ALUMINUM COLOR COATED
with corner pieces

Length: 2.50 m

| Height in mm | Art No. |
|--------------|-----------------|
| 8.0 | FVGP 080-BW-250 |
| 10.0 | FVGP 100-BW-250 |
| 12.5 | FVGP 125-BW-250 |

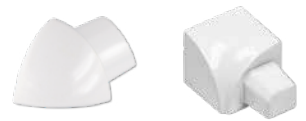
External corners

| Height in mm | Art No. |
|--------------|---------------|
| 8.0 | E-FVGP 080-BW |
| 10.0 | E-FVGP 100-BW |
| 12.5 | E-FVGP 125-BW |

Internal corners

| Height in mm | Art No. |
|--------------|---------------|
| 8.0 | I-FVGP 080-BW |
| 10.0 | I-FVGP 100-BW |
| 12.5 | I-FVGP 125-BW |

brilliant white



Length: 2.50 m

| Height in mm | Art No. |
|--------------|-----------------|
| 8.0 | FVGP 080-SG-250 |
| 10.0 | FVGP 100-SG-250 |
| 12.5 | FVGP 125-SG-250 |

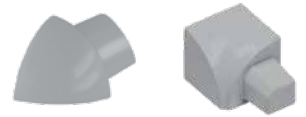
External corners

| Height in mm | Art No. |
|--------------|---------------|
| 8.0 | E-FVGP 080-SG |
| 10.0 | E-FVGP 100-SG |
| 12.5 | E-FVGP 125-SG |

Internal corners

| Height in mm | Art No. |
|--------------|---------------|
| 8.0 | I-FVGP 080-SG |
| 10.0 | I-FVGP 100-SG |
| 12.5 | I-FVGP 125-SG |

silver grey



Length: 2.50 m

| Height in mm | Art No. |
|--------------|-----------------|
| 8.0 | FVGP 080-BB-250 |
| 10.0 | FVGP 100-BB-250 |
| 12.5 | FVGP 125-BB-250 |

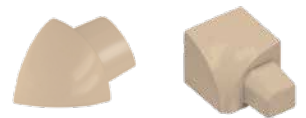
External corners

| Height in mm | Art No. |
|--------------|---------------|
| 8.0 | E-FVGP 080-BB |
| 10.0 | E-FVGP 100-BB |
| 12.5 | E-FVGP 125-BB |

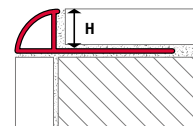
Internal corners

| Height in mm | Art No. |
|--------------|---------------|
| 8.0 | I-FVGP 080-BB |
| 10.0 | I-FVGP 100-BB |
| 12.5 | I-FVGP 125-BB |

bahamabeige



→ More colors on the next page.



fuma // ROUND - ROUND EDGE PROFILES ALUMINUM COLOR COATED
with corner pieces

Length: 2.50 m

| Height in mm | Art No. |
|--------------|-----------------|
| 8.0 | FVGP 080-CA-250 |
| 10.0 | FVGP 100-CA-250 |
| 12.5 | FVGP 125-CA-250 |

External corners

| Height in mm | Art No. |
|--------------|---------------|
| 8.0 | E-FVGP 080-CA |
| 10.0 | E-FVGP 100-CA |
| 12.5 | E-FVGP 125-CA |

Internal corners

| Height in mm | Art No. |
|--------------|---------------|
| 8.0 | I-FVGP 080-CA |
| 10.0 | I-FVGP 100-CA |
| 12.5 | I-FVGP 125-CA |

caramel



Length: 2.50 m

| Height in mm | Art No. |
|--------------|-----------------|
| 8.0 | FVGP 080-AG-250 |
| 10.0 | FVGP 100-AG-250 |
| 12.5 | FVGP 125-AG-250 |

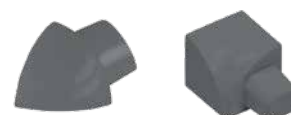
External corners

| Height in mm | Art No. |
|--------------|---------------|
| 8.0 | E-FVGP 080-AG |
| 10.0 | E-FVGP 100-AG |
| 12.5 | E-FVGP 125-AG |

Internal corners

| Height in mm | Art No. |
|--------------|---------------|
| 8.0 | I-FVGP 080-AG |
| 10.0 | I-FVGP 100-AG |
| 12.5 | I-FVGP 125-AG |

ash grey



Length: 2.50 m

| Height in mm | Art No. |
|--------------|------------------|
| 8.0 | FVGP 080-MHG-250 |
| 10.0 | FVGP 100-MHG-250 |
| 12.5 | FVGP 125-MHG-250 |

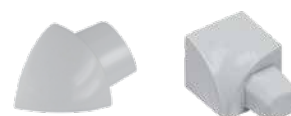
External corners

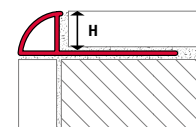
| Height in mm | Art No. |
|--------------|----------------|
| 8.0 | E-FVGP 080-MHG |
| 10.0 | E-FVGP 100-MHG |
| 12.5 | E-FVGP 125-MHG |

Internal corners

| Height in mm | Art No. |
|--------------|----------------|
| 8.0 | I-FVGP 080-MHG |
| 10.0 | I-FVGP 100-MHG |
| 12.5 | I-FVGP 125-MHG |

manhattan grey





fuma // ROUND - ROUND EDGE PROFILES ALUMINUM TEXTURE COATED with corner pieces

Length: 2.50 m

| Height in mm | Art No. |
|--------------|-----------------|
| 8.0 | FVGP 080-GM-250 |
| 10.0 | FVGP 100-GM-250 |
| 12.5 | FVGP 125-GM-250 |

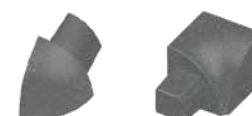
External corners

| Height in mm | Art No. |
|--------------|---------------|
| 8.0 | E-FVGP 080-GM |
| 10.0 | E-FVGP 100-GM |
| 12.5 | E-FVGP 125-GM |

Internal corners

| Height in mm | Art No. |
|--------------|---------------|
| 8.0 | I-FVGP 080-GM |
| 10.0 | I-FVGP 100-GM |
| 12.5 | I-FVGP 125-GM |

grey metallic



Length: 2.50 m

| Height in mm | Art No. |
|--------------|-----------------|
| 8.0 | FVGP 080-AT-250 |
| 10.0 | FVGP 100-AT-250 |
| 12.5 | FVGP 125-AT-250 |

External corners

| Height in mm | Art No. |
|--------------|---------------|
| 8.0 | E-FVGP 080-AT |
| 10.0 | E-FVGP 100-AT |
| 12.5 | E-FVGP 125-AT |

Internal corners

| Height in mm | Art No. |
|--------------|---------------|
| 8.0 | I-FVGP 080-AT |
| 10.0 | I-FVGP 100-AT |
| 12.5 | I-FVGP 125-AT |

anthracite metallic



Length: 2.50 m

| Height in mm | Art No. |
|--------------|-----------------|
| 8.0 | FVGP 080-TB-250 |
| 10.0 | FVGP 100-TB-250 |
| 12.5 | FVGP 125-TB-250 |

External corners

| Height in mm | Art No. |
|--------------|---------------|
| 8.0 | E-FVGP 080-TB |
| 10.0 | E-FVGP 100-TB |
| 12.5 | E-FVGP 125-TB |

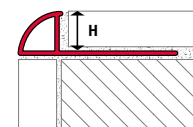
Internal corners

| Height in mm | Art No. |
|--------------|---------------|
| 8.0 | I-FVGP 080-TB |
| 10.0 | I-FVGP 100-TB |
| 12.5 | I-FVGP 125-TB |

terra brown



→ More surfaces on the next page.



fuma // ROUND - ROUND EDGE PROFILES ALUMINUM TEXTURE COATED with corner pieces

Length: 2.50 m

| Height in mm | Art No. |
|--------------|-----------------|
| 8.0 | FVGP 080-UB-250 |
| 10.0 | FVGP 100-UB-250 |
| 12.5 | FVGP 125-UB-250 |

External corners

| Height in mm | Art No. |
|--------------|---------------|
| 8.0 | E-FVGP 080-UB |
| 10.0 | E-FVGP 100-UB |
| 12.5 | E-FVGP 125-UB |

Internal corners

| Height in mm | Art No. |
|--------------|---------------|
| 8.0 | I-FVGP 080-UB |
| 10.0 | I-FVGP 100-UB |
| 12.5 | I-FVGP 125-UB |

umbra



Length: 2.50 m

| Height in mm | Art No. |
|--------------|-----------------|
| 8.0 | FVGP 080-QZ-250 |
| 10.0 | FVGP 100-QZ-250 |
| 12.5 | FVGP 125-QZ-250 |

External corners

| Height in mm | Art No. |
|--------------|---------------|
| 8.0 | E-FVGP 080-QZ |
| 10.0 | E-FVGP 100-QZ |
| 12.5 | E-FVGP 125-QZ |

Internal corners

| Height in mm | Art No. |
|--------------|---------------|
| 8.0 | I-FVGP 080-QZ |
| 10.0 | I-FVGP 100-QZ |
| 12.5 | I-FVGP 125-QZ |

quarz



Length: 2.50 m

| Height in mm | Art No. |
|--------------|-----------------|
| 8.0 | FVGP 080-SD-250 |
| 10.0 | FVGP 100-SD-250 |
| 12.5 | FVGP 125-SD-250 |

External corners

| Height in mm | Art No. |
|--------------|---------------|
| 8.0 | E-FVGP 080-SD |
| 10.0 | E-FVGP 100-SD |
| 12.5 | E-FVGP 125-SD |

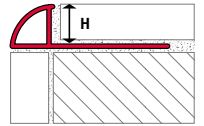
Internal corners

| Height in mm | Art No. |
|--------------|---------------|
| 8.0 | I-FVGP 080-SD |
| 10.0 | I-FVGP 100-SD |
| 12.5 | I-FVGP 125-SD |

sand



→ More surfaces on the next page.



fuma // ROUND - ROUND EDGE PROFILES ALUMINUM TEXTURE COATED
with corner pieces

Length: 2.50 m

| Height in mm | Art No. |
|--------------|-----------------|
| 8.0 | FVGP 080-DL-250 |
| 10.0 | FVGP 100-DL-250 |
| 12.5 | FVGP 125-DL-250 |

External corners

| Height in mm | Art No. |
|--------------|---------------|
| 8.0 | E-FVGP 080-DL |
| 10.0 | E-FVGP 100-DL |
| 12.5 | E-FVGP 125-DL |

Internal corners

| Height in mm | Art No. |
|--------------|---------------|
| 8.0 | I-FVGP 080-DL |
| 10.0 | I-FVGP 100-DL |
| 12.5 | I-FVGP 125-DL |

dolomitic



Length: 2.50 m

| Height in mm | Art No. |
|--------------|------------------|
| 8.0 | FVGP 080-ARC-250 |
| 10.0 | FVGP 100-ARC-250 |
| 12.5 | FVGP 125-ARC-250 |

External corners

| Height in mm | Art No. |
|--------------|----------------|
| 8.0 | E-FVGP 080-ARC |
| 10.0 | E-FVGP 100-ARC |
| 12.5 | E-FVGP 125-ARC |

Internal corners

| Height in mm | Art No. |
|--------------|----------------|
| 8.0 | I-FVGP 080-ARC |
| 10.0 | I-FVGP 100-ARC |
| 12.5 | I-FVGP 125-ARC |

arctic



Length: 2.50 m

| Height in mm | Art No. |
|--------------|------------------|
| 8.0 | FVGP 080-KRD-250 |
| 10.0 | FVGP 100-KRD-250 |
| 12.5 | FVGP 125-KRD-250 |

External corners

| Height in mm | Art No. |
|--------------|----------------|
| 8.0 | E-FVGP 080-KRD |
| 10.0 | E-FVGP 100-KRD |
| 12.5 | E-FVGP 125-KRD |

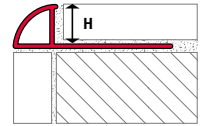
Internal corners

| Height in mm | Art No. |
|--------------|----------------|
| 8.0 | I-FVGP 080-KRD |
| 10.0 | I-FVGP 100-KRD |
| 12.5 | I-FVGP 125-KRD |

chalk



→ More surfaces on the next page.



fuma // ROUND - ROUND EDGE PROFILES ALUMINUM TEXTURE COATED
with corner pieces

Length: 2.50 m

| Height in mm | Art No. |
|--------------|-----------------|
| 8.0 | FVGP 080-CR-250 |
| 10.0 | FVGP 100-CR-250 |
| 12.5 | FVGP 125-CR-250 |

External corners

| Height in mm | Art No. |
|--------------|---------------|
| 8.0 | E-FVGP 080-CR |
| 10.0 | E-FVGP 100-CR |
| 12.5 | E-FVGP 125-CR |

Internal corners

| Height in mm | Art No. |
|--------------|---------------|
| 8.0 | I-FVGP 080-CR |
| 10.0 | I-FVGP 100-CR |
| 12.5 | I-FVGP 125-CR |

creme



Length: 2.50 m

| Height in mm | Art No. |
|--------------|------------------|
| 8.0 | FVGP 080-MSW-250 |
| 10.0 | FVGP 100-MSW-250 |
| 12.5 | FVGP 125-MSW-250 |

External corners

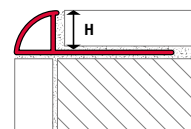
| Height in mm | Art No. |
|--------------|----------------|
| 8.0 | E-FVGP 080-MSW |
| 10.0 | E-FVGP 100-MSW |
| 12.5 | E-FVGP 125-MSW |

Internal corners

| Height in mm | Art No. |
|--------------|----------------|
| 8.0 | I-FVGP 080-MSW |
| 10.0 | I-FVGP 100-MSW |
| 12.5 | I-FVGP 125-MSW |

black matt





fuma // ROUND - ROUND EDGE PROFILES PVC with corner pieces

Length: 2.50 m

| Height in mm | Art No. |
|--------------|----------------|
| 6.0 | FVG 060-BW-250 |
| 8.0 | FVG 080-BW-250 |
| 10.0 | FVG 100-BW-250 |
| 12.5 | FVG 125-BW-250 |

Length: 3.00 m

| Height in mm | Art No. |
|--------------|----------------|
| 6.0 | FVG 060-BW-300 |
| 8.0 | FVG 080-BW-300 |
| 10.0 | FVG 100-BW-300 |
| 12.5 | FVG 125-BW-300 |

brilliant white



External corners

| Height in mm | Art No. |
|--------------|--------------|
| 6.0 | E-FVG 060-BW |
| 8.0 | E-FVG 080-BW |
| 10.0 | E-FVG 100-BW |
| 12.5 | E-FVG 125-BW |



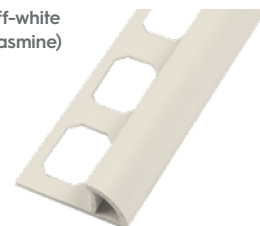
Length: 2.50 m

| Height in mm | Art No. |
|--------------|----------------|
| 8.0 | FVG 080-AW-250 |
| 10.0 | FVG 100-AW-250 |
| 12.5 | FVG 125-AW-250 |

Length: 3.00 m

| Height in mm | Art No. |
|--------------|----------------|
| 8.0 | FVG 080-AW-300 |
| 10.0 | FVG 100-AW-300 |
| 12.5 | FVG 125-AW-300 |

off-white
(jasmine)



External corners

| Height in mm | Art No. |
|--------------|--------------|
| 8.0 | E-FVG 080-AW |
| 10.0 | E-FVG 100-AW |
| 12.5 | E-FVG 125-AW |



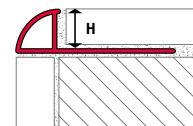
→ More colors
on the next page.

Note:

The correct application of our products is not subject to our control. A warranty can therefore only be given for the quality of our products within the framework of our sales and delivery conditions, but not for successful processing. We reserve the right to make changes. Details which go beyond the contents of this data sheet require written confirmation.

For further information, please refer to the currently valid general catalog.

revision: 05/2024



fuma // ROUND - ROUND EDGE PROFILES PVC
with corner pieces

Length: 2.50 m

| Height in mm | Art No. |
|--------------|----------------|
| 8.0 | FVG 080-SG-250 |
| 10.0 | FVG 100-SG-250 |
| 12.5 | FVG 125-SG-250 |

External corners

| Height in mm | Art No. |
|--------------|--------------|
| 8.0 | E-FVG 080-SG |
| 10.0 | E-FVG 100-SG |
| 12.5 | E-FVG 125-SG |

silver grey



Length: 2.50 m

| Height in mm | Art No. |
|--------------|----------------|
| 8.0 | FVG 080-CA-250 |
| 10.0 | FVG 100-CA-250 |
| 12.5 | FVG 125-CA-250 |

External corners

| Height in mm | Art No. |
|--------------|--------------|
| 8.0 | E-FVG 080-CA |
| 10.0 | E-FVG 100-CA |
| 12.5 | E-FVG 125-CA |

caramel



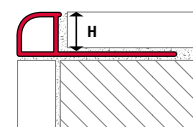
Length: 2.50 m

| Height in mm | Art No. |
|--------------|----------------|
| 8.0 | FVG 080-PG-250 |
| 10.0 | FVG 100-PG-250 |
| 12.5 | FVG 125-PG-250 |

External corners

| Height in mm | Art No. |
|--------------|--------------|
| 8.0 | E-FVG 080-PG |
| 10.0 | E-FVG 100-PG |
| 12.5 | E-FVG 125-PG |

pergamon



fuma // ROND - ROUND PROFILES PVC
with corner pieces

Length: 2.50 m

| Height in mm | Art No. |
|--------------|----------------|
| 8.0 | FRO 080-BW-250 |
| 10.0 | FRO 100-BW-250 |
| 12.5 | FRO 125-BW-250 |

Length: 3.00 m

| Height in mm | Art No. |
|--------------|----------------|
| 8.0 | FRO 080-BW-300 |
| 10.0 | FRO 100-BW-300 |
| 12.5 | FRO 125-BW-300 |

brilliant white



External corners

| Height in mm | Art No. |
|--------------|--------------|
| 8.0 | E-FRO 080-BW |
| 10.0 | E-FRO 100-BW |
| 12.5 | E-FRO 125-BW |

Internal corners

| Height in mm | Art No. |
|--------------|--------------|
| 8.0 | I-FRO 080-BW |
| 10.0 | I-FRO 100-BW |
| 12.5 | I-FRO 125-BW |

